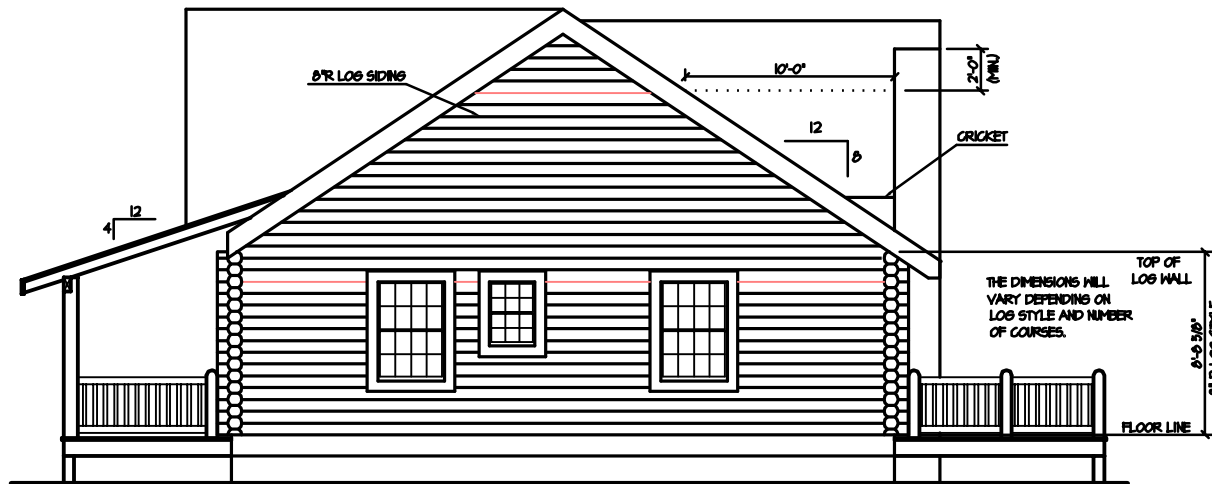


FRONT ELEVATION 1/4" = 1'-0"

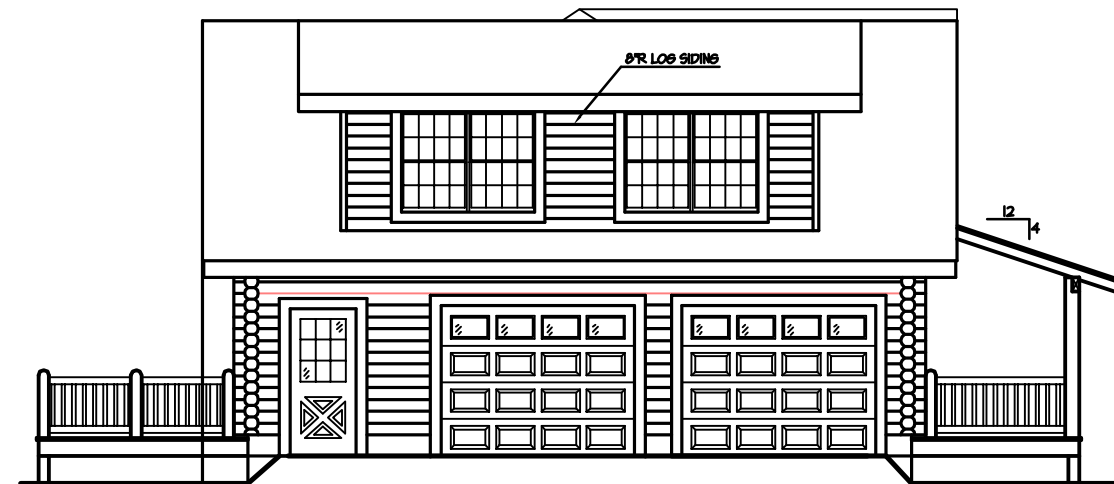
David Dysarczyk
Jim Barna Log and Timber Homes
 22459 Alberta Street
 Oneida, Tennessee 37841-4759
 1-800-962-4734 Ext-231
 (423) 569-2180 Fax (423)569-5903
 Cell Phone (865) 617-2965
 E-mail daved@jimbarna.com



REAR ELEVATION 1/4" = 1'-0"



RIGHT ELEVATION 1/4" = 1'-0"



LEFT ELEVATION 1/4" = 1'-0"