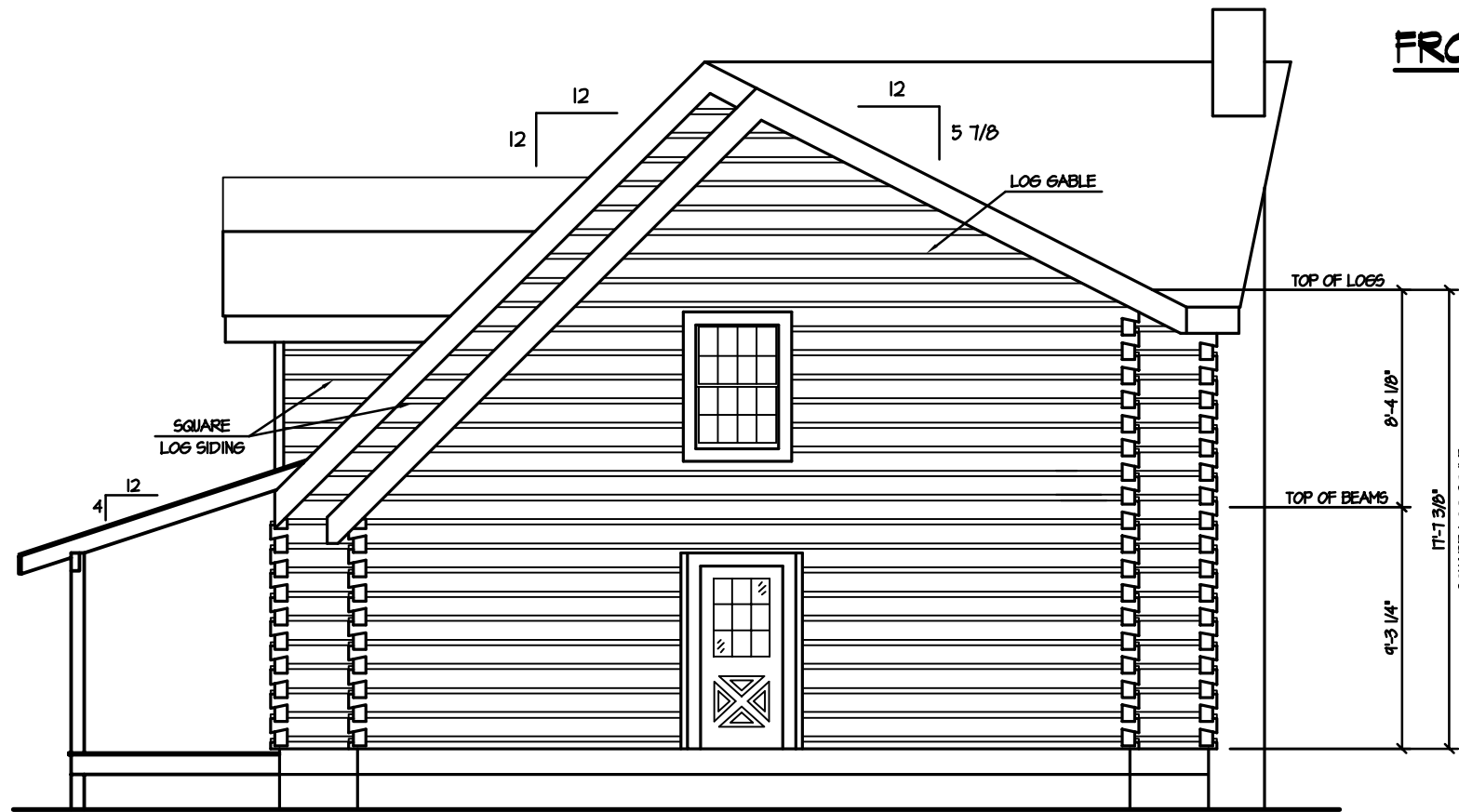




FRONT ELEVATION $1/4" = 1'-0"$



RIGHT ELEVATION $1/4" = 1'-0"$

David Dysarczyk
Jim Barna Log and Timber Homes
 22459 Alberta Street
 Oneida, Tennessee 37841-4759
 1-800-962-4734 Ext-231
 (423) 569-2180 Fax (423) 569-5903
 Cell Phone (865) 617-2965
 E-mail daved@jimbarna.com

