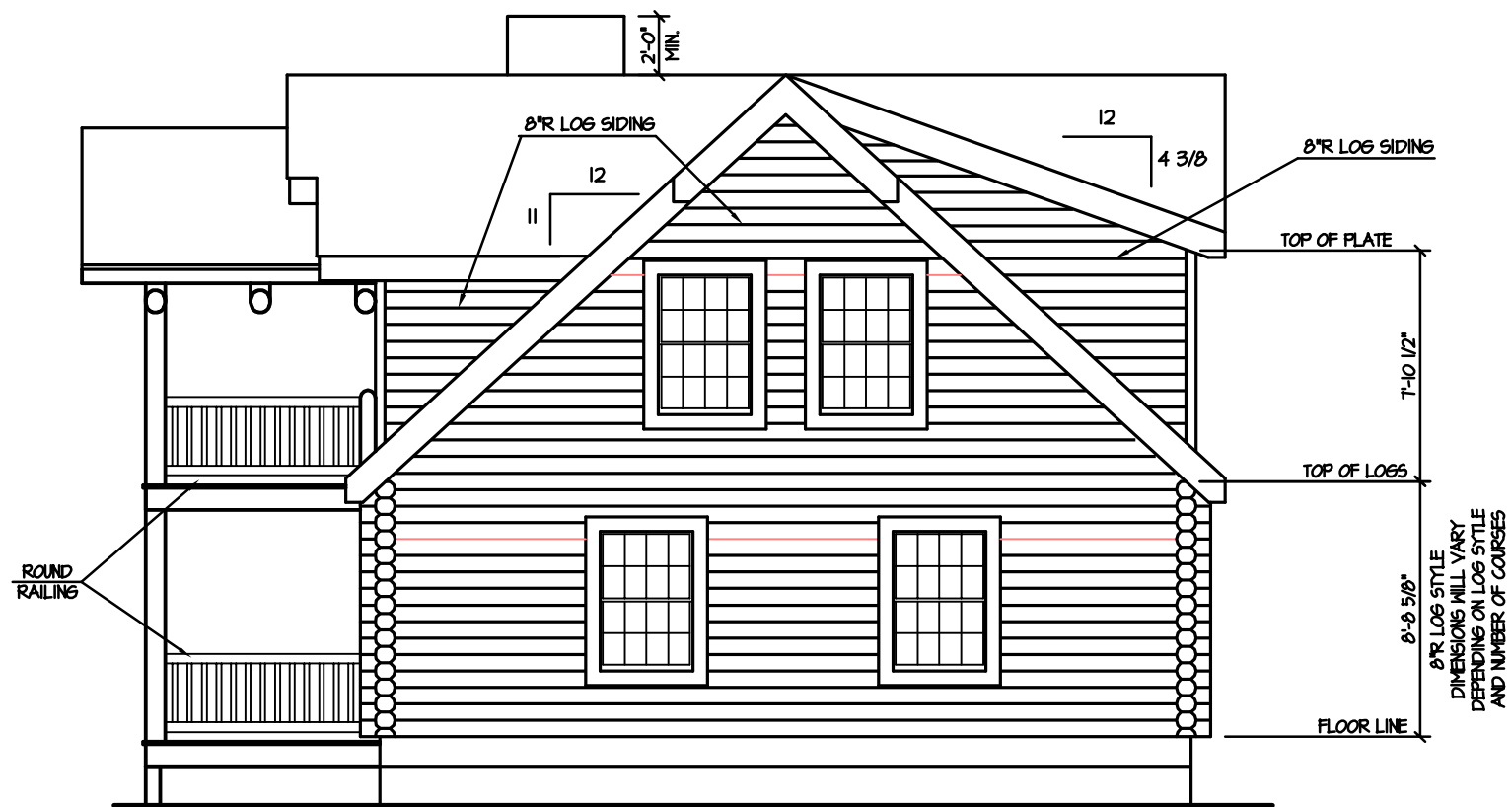


**FRONT ELEVATION**  $1/4" = 1'-0"$



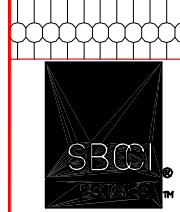
**RIGHT ELEVATION**  $1/4" = 1'-0"$

**BARNA**  
Log Homes  
*The Log Home Authority*

Barna Log Homes  
P.O. BOX 4629  
ONEIDA TENNESSEE 37841  
Phone: 423-569-8559  
Fax: 423-569-5903

COPYRIGHT ON ANY DESIGNS CREATED, MODIFIED OR DERIVATIVES THEREOF BELONG TO BARNA LOG HOMES. LOG HOMES MAKES NO WARRANTY AS TO PLANS CONFORMANCE WITH ANY LOCAL, STATE OR FEDERAL CODES. AN INSPECTION AND/OR ENGINEER IS REQUIRED. ANY DISCREPANCIES IN THE PLANS SHALL BE BROUGHT TO THE ATTENTION OF BARNA LOG HOMES IMMEDIATELY. THIS IS A PRELIMINARY DRAWING. ANY CHANGES TO THESE PLANS ARE THE PROPERTY OF BARNA LOG HOMES. Do not scale drawings. Printed dimensions supersede all scale factors.

The Standard Model:  
Arrowhead



REPORT # 2305  
CODE COMPLIANCE FOR  
2003 INTERNATIONAL CODE  
FOR ONE- AND TWO-FAMILY  
DWELLINGS

| Elevations    |           |
|---------------|-----------|
| PA Number:    | 00000     |
| Dealer:       | BLH       |
| Coordinator:  | BLH       |
| Date:         | 08/15/05  |
| Drawn by:     | DJJ       |
| Checked by:   | TDM       |
| File Name:    | Arrowhead |
| Sheet Number: | <b>1</b>  |

COPYRIGHT 2005, ALL RIGHTS RESERVED BY BARNA LOG HOMES, LLC